

Seafloor™

ECHOBOAT-160

Uncrewed Surface Vessel for Hydrographic Survey Applications



The EchoBoat-160 USV is a purpose-built remote survey platform for hydrographic data collection. With true one-switch startup, the nimble vessel accomplishes the same results demanded of large, crewed boats more efficiently and at a fraction of the cost. Like its renowned predecessors, the fifth generation EchoBoat-160 integrates professional-grade sensor suites in a compact package to navigate challenging bodies of water by remote control or autonomous wayfinding. Perform hydrographic surveys remotely, safely, and confidently with this meticulously engineered uncrewed surface vessel.

KEY FEATURES

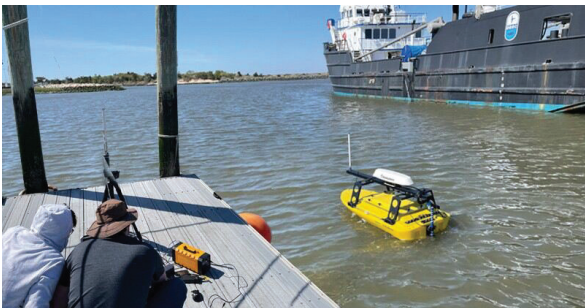
- ▶ Two-Person transportable
- ▶ 8 hour endurance
- ▶ Autonomous and Remote Control operation
- ▶ Fully customizable to fit any job and budget

OPTIONAL FEATURES

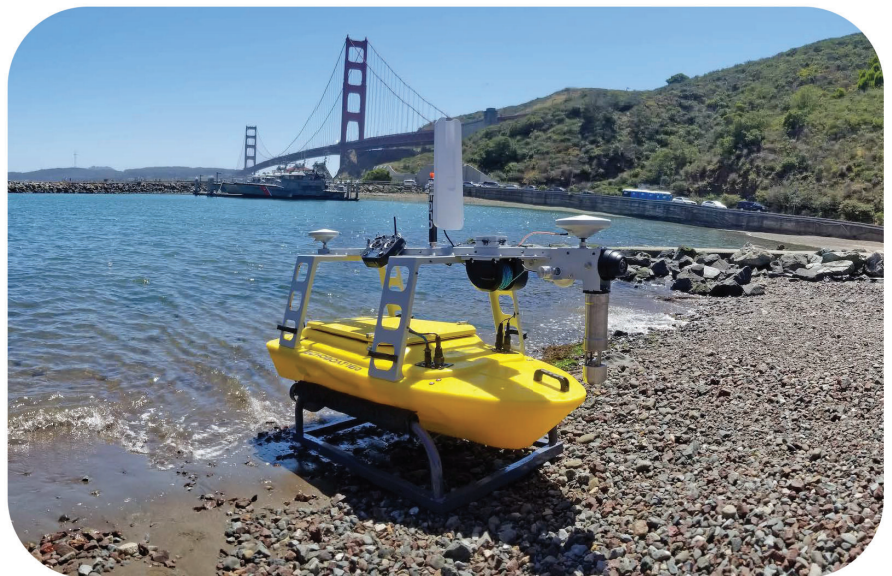
- ▶ SmartCast™ SVP/CTD Winch System
- ▶ Extended Range, Telemetry, and Control
- ▶ AutoNav™ Autopilot System
- ▶ Computer with Wifi Bridge
- ▶ Front Facing Camera
- ▶ EchoCart with LARS™ transport / launch & recovery system.

KEY UPDATES

- ▶ Single Battery Pack with one-switch Startup
- ▶ Lightweight aluminum deck with improved accessibility
- ▶ Easy access watertight lid saves time during startup and when swapping sensors
- ▶ Stiffer, redesigned mast improves data collection accuracy



EchoBoat-160™ can navigate tight spaces while in ports



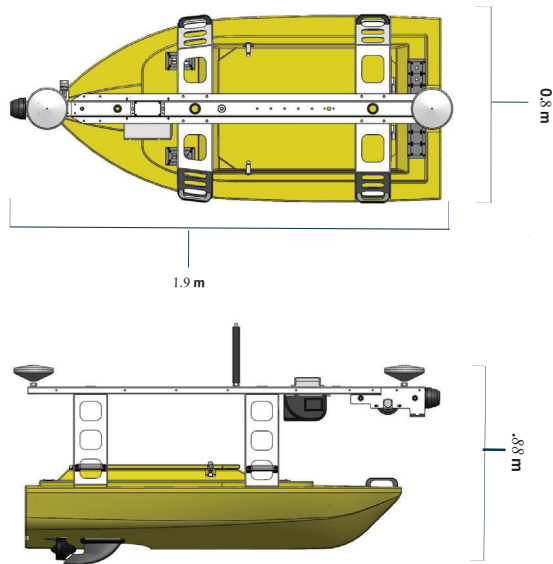
EchoBoat-160™ at Horseshoe Bay

Seafloor Systems, Incorporated | 4475 Golden Foothill Parkway | El Dorado Hills, CA 95762 | USA

info@seafloor.com | www.seafloorsystems.com

EchoBoat-160™

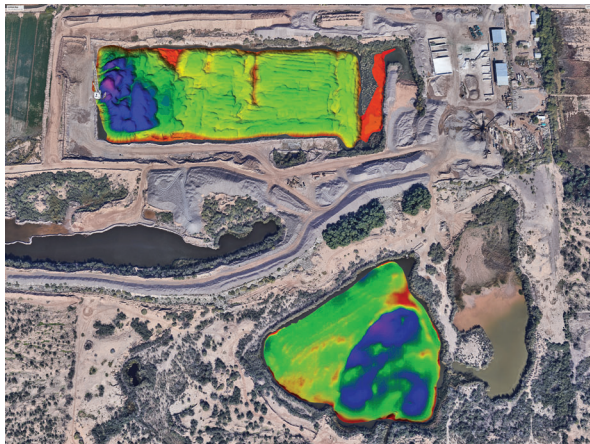
Uncrewed Surface Vessel



EchoBoat-160™ Specifications



EchoBoat-160™ with SeaRAY™ Data



EchoBoat-160™ used to perform surveys on multiple sites

Specifications

Typical Survey Speed	2 kn
Top Speed	3 knots RCV
Hull Length	1.7 m / 66.14 in
Hull Width	0.8 m / 31.5 in
Hull Material	UV Resistant HDPE
Transducer Wells	Main
Frame	Powder Coated Aluminum
Hardware	Stainless Steel
Empty Hull Weight	50 kg / 110 lbs
Battery Endurance	Up to 8 Hours at Survey Speed
GPS	Customer Specified
Payload Capacity	27 kg / 60 lbs
Power	24v
Motor	2 x Thrusters
R/C	2.4 GHz/900MHz Long Range RCU (868MHz UK)
Remote Range	Up to 2km

Instrumentation Options

Sonar Modules

Multibeam
Echosounder
Singlebeam
Echosounder
ADCP/DVL
Side Scan Sonar
Subbottom Profiler
Magnetometer

Auxiliary Sensors

Sound Velocimeter
Sound Velocity
Profiler / CTD Wi-Fi
Remote Desktop
HD Thermal Camera
Remote SVP Winch
LiDAR

GPS/GNSS

RTK/GNSS
DGPS
INS

Seafloor Systems, Incorporated | 4475 Golden Foothill Parkway | El Dorado Hills, CA 95762 | USA

info@seafloor.com | www.seaflorsystems.com